

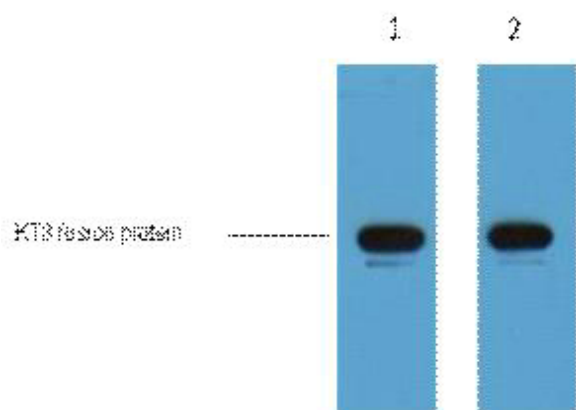


# KT3-Tag Monoclonal Antibody(3D11)

<b>Catalog No</b>	YP-Ab-04737
<b>Isotype</b>	IgG
<b>Reactivity</b>	Species independent
<b>Applications</b>	WB
<b>Gene Name</b>	
<b>Protein Name</b>	
<b>Immunogen</b>	Synthetic Peptide of KT3-Tag
<b>Specificity</b>	The antibody detects KT3 tag fusion proteins.
<b>Formulation</b>	PBS, pH 7.4, containing 0.5%BSA, 0.02% sodium azide as Preservative and 50% Glycerol.
<b>Source</b>	Monoclonal, Mouse
<b>Purification</b>	The antibody was affinity-purified from mouse ascites by affinity-chromatography using specific immunogen.
<b>Dilution</b>	WB: 1:5000
<b>Concentration</b>	1 mg/ml
<b>Purity</b>	≥90%
<b>Storage Stability</b>	-20°C/1 year
<b>Synonyms</b>	
<b>Observed Band</b>	
<b>Cell Pathway</b>	
<b>Tissue Specificity</b>	
<b>Function</b>	
<b>Background</b>	The KT3 epitope tag is commonly engineered onto the N- or C- terminus of a protein of interest so that the tagged protein can be analyzed and visualized using immunochemical methods. KT3 epitope tag can be used to monitor expression of the protein products transfected with cDNA constructs. The recognized KT3 epitope represents the amino acid sequence KPPTPPPEPET derived from the Simian Virus 40 (SV40) large T-antigen.
<b>matters needing attention</b>	Avoid repeated freezing and thawing!
<b>Usage suggestions</b>	This product can be used in immunological reaction related experiments. For more information, please consult technical personnel.



## Products Images



1ug KT3 fusion protein+ Primary antibody dilution at  
1) 1:5000 2) 1:10000